

PSB 04

Dulliau gweithredu lleol ar gyfer lleihau tlodi:

Deddf Llesiant Cenedlaethau'r Dyfodol a byrddau gwasanaethau  
cyhoeddus Local Approaches to poverty reduction:

The Well-Being of Future Generations Act and public service boards

Ymateb gan: Conwy a Sir Ddinbych bwrdd gwasanaethau cyhoeddus

Response from: Conwy and Denbighshire Public Services Board

# **Inquiry into Local Approaches to poverty reduction: The Well-Being of Future Generations Act and public service boards**

## **Conwy and Denbighshire Public Services Board - Response**

### **1. Examine how public service boards (PSBs) are targeting improvements to public services in Wales's most deprived communities**

At this stage of development, the Well-being Plan is targeting improvements at county level. More detailed work is taking place as part of the development of the plan.

### **2. a. Assess the quality of evidence used by PSBs in the development of their local Well-Being Plans in relation to the needs and experiences of people living in poverty**

Partners on the Conwy and Denbighshire Public Services Board have worked together on developing a Well-being Assessment for the area, which is available to view online [here](#). We have taken this joint approach to ensure that the assessment is shaped using the expertise, knowledge and insight of all the Public Services Board partners.

The assessment seeks to capture the strengths and positives of its people and communities. It also seeks to describe the challenges and opportunities faced both now and in the future. The Well-being Assessment has been informed by data, national and local research and engagement feedback.

There is a chapter within the well-being assessment which specifically looks at tackling poverty and deprivation - <http://conwyanddenbighshirepsb.org.uk/en/home/english-wellbeing-assessment/english-poverty-and-deprivation/>

### **b. how PSBs are approaching the impending demise of Communities First**

Community First leads for both Conwy and Denbighshire attended a PSB meeting in July 2017 to provide the Board with an update on the transition from Communities First to the new Welsh Government Employability programme. Initial discussions also took place on the proposed Communities First Legacy projects for April 2018 onwards.

The Board have requested that they are kept informed of future transitional arrangements.

### **3. Consider how PSBs are specifically addressing rural poverty as part of the development of their Well-Being plans**

As previously stated, at this stage of development, the Well-being Plan is targeting improvements at county level.

However the Well-being Assessment highlighted the types of poverty and challenges that rural communities face.

Additionally to enable meaningful analysis below the unitary authority level, the well-being assessment identified 11 community areas for the region - five areas in Conwy County Borough and six areas in Denbighshire. These areas are broadly based on how local communities access their services such as schools, health, police, social services and housing. Community profiles were also created for each area, which highlighted key points including poverty and deprivation as well as health, economy, housing and community safety.

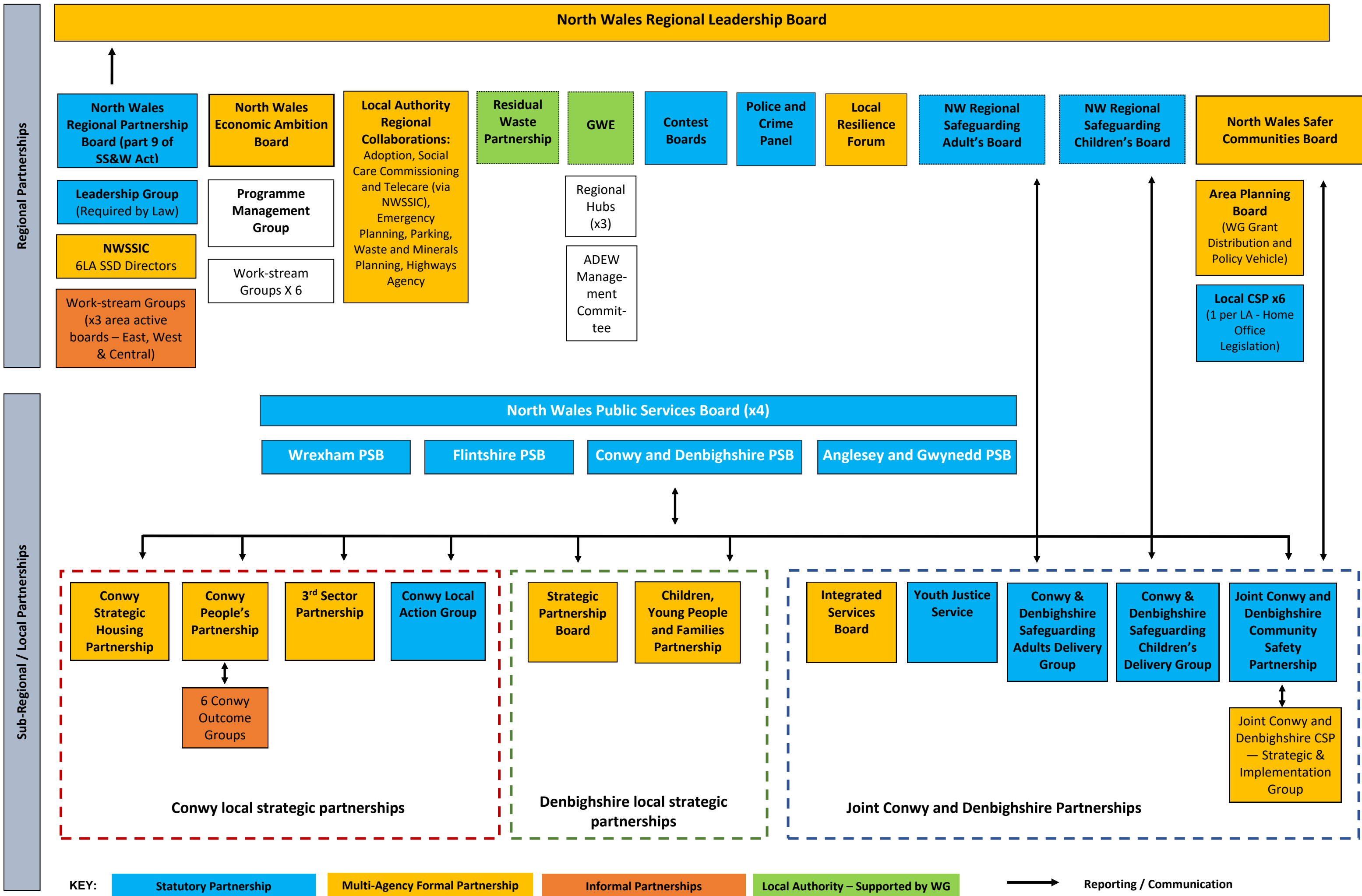
The community areas are available on the PSB website -

<http://conwyanddenbighshirepsb.org.uk/en/home/english-wellbeing-assessment/>

**4. Explore and understand the experiences of organisations (public, private and third-sector) and individuals in the development of well-being plans and the potential impact of greater regional working in the future**

During the development of the well-being plan, the Conwy & Denbighshire PSB took into consideration the work of other regional and local partnerships. Please see appendix 1.

The board also took into consideration the corporate priorities of partner organisations to identify areas of greatest collaboration. Please see appendix 2.





		PSB partners												Regional partnerships						Future Gens	
		BCU	CCBC	CVSC	DCC	DVSC	NPS	NRW	NWFRS	NWP	PCC	PHW	WCRC	WG	RPB	NWEAB	NWSCB	GwE	NWRSC		NWRAB
Economic Prosperity and Skills	Employment and skills		✓		✓			✓					✓		✓						✓
	Economic development	✓	✓		✓			✓					✓		✓						✓
	Educational attainment and standards		✓										✓					✓			
	Poverty, deprivation and disengagement	✓											✓								
	Rural infrastructure	✓											✓								
	Education inequalities		✓		✓								✓					✓			
	Tourism and events		✓		✓								✓		✓						
Environment	Climate change and carbon emissions	✓	✓					✓				✓	✓								✓
	Environmental resilience	✓			✓			✓				✓	✓								✓
	Renewable Energy generation		✓		✓								✓								
	Flood defence/ prevention		✓					✓		✓			✓								
	Sustainable management of natural resources	✓						✓					✓								
	Biodiversity							✓													
	Green growth							✓					✓								
	Land and water management							✓													
Recycling		✓										✓									
Culture & Heritage	Welsh language and identity	✓	✓										✓								
	Welsh language in the workplace	✓	✓								✓		✓								
	Arts, libraries, museums		✓										✓								
Connectivity	Transport		✓		✓								✓								
	Broadband and Internet Access				✓					✓			✓								
	Community Infrastructure	✓						✓					✓								
	Social isolation	✓							✓				✓	✓							
	volunteering			✓		✓		✓													
	Resilient communities	✓	✓		✓			✓				✓	✓								✓
	Community assets	✓			✓								✓								
	Integrated public services	✓											✓								✓
Connecting and engaging with the public	✓	✓		✓			✓					✓								✓	
Future Planning	Population Trends	✓											✓								✓
	Future of farming						✓						✓								

RPB – Regional Partnership Board (Social Care collaborative)

NWSCB – North Wales Safer Communities Board

NWRSAB – North Wales Regional Safeguarding Adults Board

NWEAB – North Wales Economic Ambition Board

NWRSCB – North Wales Regional Safeguarding Children’s Board