

SB 4/2009

28 January 2009

Local Authority Budgets for Education 2008-09: Wales and England Comparison

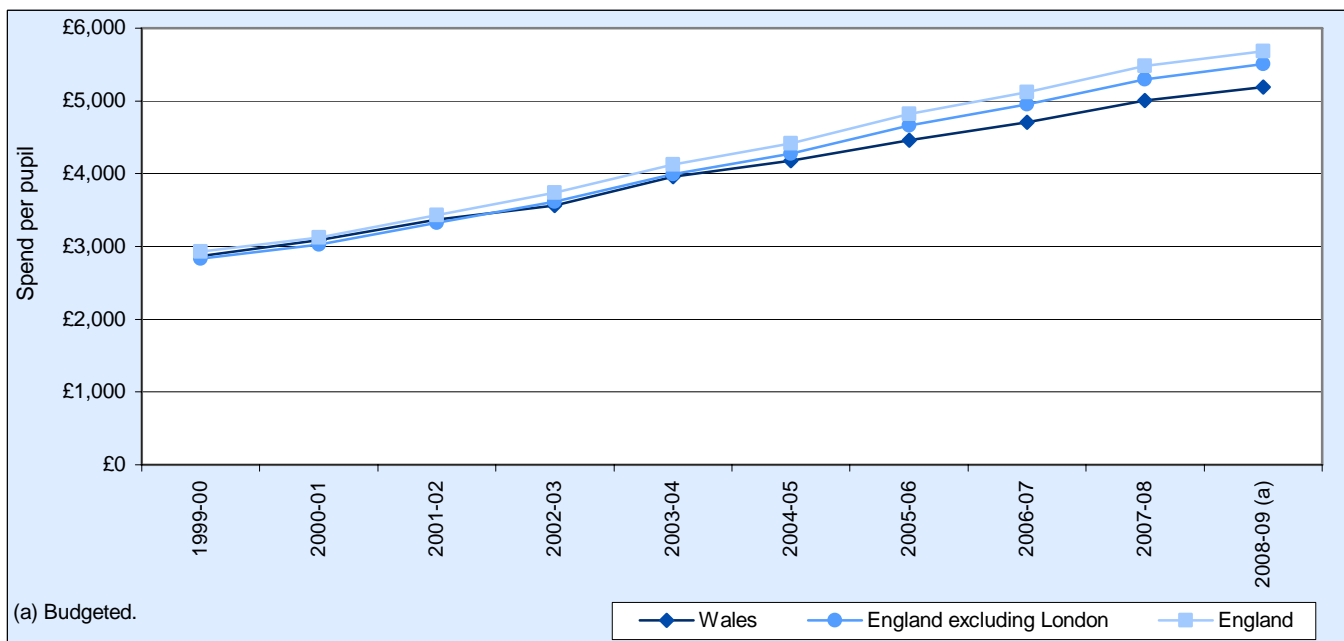
Introduction

This statistical bulletin analyses the resources that local authorities budgeted to make available for education in 2008-09. The bulletin makes comparisons between the Wales average and the overall and regional averages in England.

Key Points

- Average budgeted spend per pupil on local authority education in Wales in 2008-09 was £5,192 (tables 1 and 3), representing an increase of 3.8% on the previous year's outturn. This is £496 per pupil lower than in England (£316 excluding London).
- The overall budget per pupil for England was £5,687 (£5,507 excluding London), representing a rise of 3.8% on the previous year's outturn (table 2, 3 and chart 1).
- Budgeted spend per head of population in Wales in 2008-09 was £806. The budget per head for England was £812 (£791 excluding London) (table 3).
- 2008-09 pupil numbers fell by 0.5% for both Wales and England (table 3).

Chart 1: Education spend per pupil, Wales and England, 1999-00 to 2008-09



Additional information on budgets for education in Wales is available on the Welsh Assembly Government 'StatsWales' website www.statswales.wales.gov.uk. Further information can be found on the last page of this bulletin.

Contact: Tel: 029 2082 3519 **E-mail:** stats.finance@wales.gsi.gov.uk **Next Update:** January 2010 (provisional)



Table 1 shows education budgets in Wales for 2008-09. Ceredigion had the highest budgeted spend per pupil whilst the Vale of Glamorgan had the lowest.

Table 1 - Education budgets, Wales, 2008-09 (a)

Authority	£ million	£ per pupil (b)	Difference from Wales average
Isle of Anglesey	53.8	5,637	8.6%
Gwynedd	92.0	5,325	2.6%
Conwy	85.9	5,340	2.9%
Denbighshire	80.3	5,091	-1.9%
Flintshire	116.1	4,921	-5.2%
Wrexham	94.3	5,189	-0.1%
Powys	107.0	5,355	3.1%
Ceredigion	59.8	5,959	14.8%
Pembrokeshire	100.1	5,386	3.7%
Carmarthenshire	144.7	5,290	1.9%
Swansea	175.2	5,185	-0.1%
Neath Port Talbot	112.2	5,509	6.1%
Bridgend	106.8	4,768	-8.2%
Vale of Glamorgan	98.0	4,621	-11.0%
Cardiff	242.7	5,090	-2.0%
Rhondda Cynon Taf	208.3	5,149	-0.8%
Merthyr Tydfil	50.3	5,281	1.7%
Caerphilly	151.8	5,299	2.1%
Blaenau Gwent	59.2	5,586	7.6%
Torfaen	79.7	5,055	-2.6%
Monmouthshire	64.2	5,265	1.4%
Newport	118.8	5,057	-2.6%
Wales	2,401.0	5,192	0.0%
Highest	242.7	5,959	14.8%
Lowest	50.3	4,621	-11.0%

(a) The education expenditure figures in this table are on a 'current basis', that is they include expenditure financed by specific government grants including DCELLS grant for post 16 provision. The education figure includes FRS17 costs for those authorities that have completed their returns on that basis. The figures include expenditure on schools services, LEA central costs, mandatory student awards, inter-authority education recoupment, nursery schools and adult and youth education.

(b) The pupil numbers used in this table include full time equivalents for nursery, primary, secondary, special and pupil referral units.

Chart 2: Education budgets per pupil, Wales, 2008-09

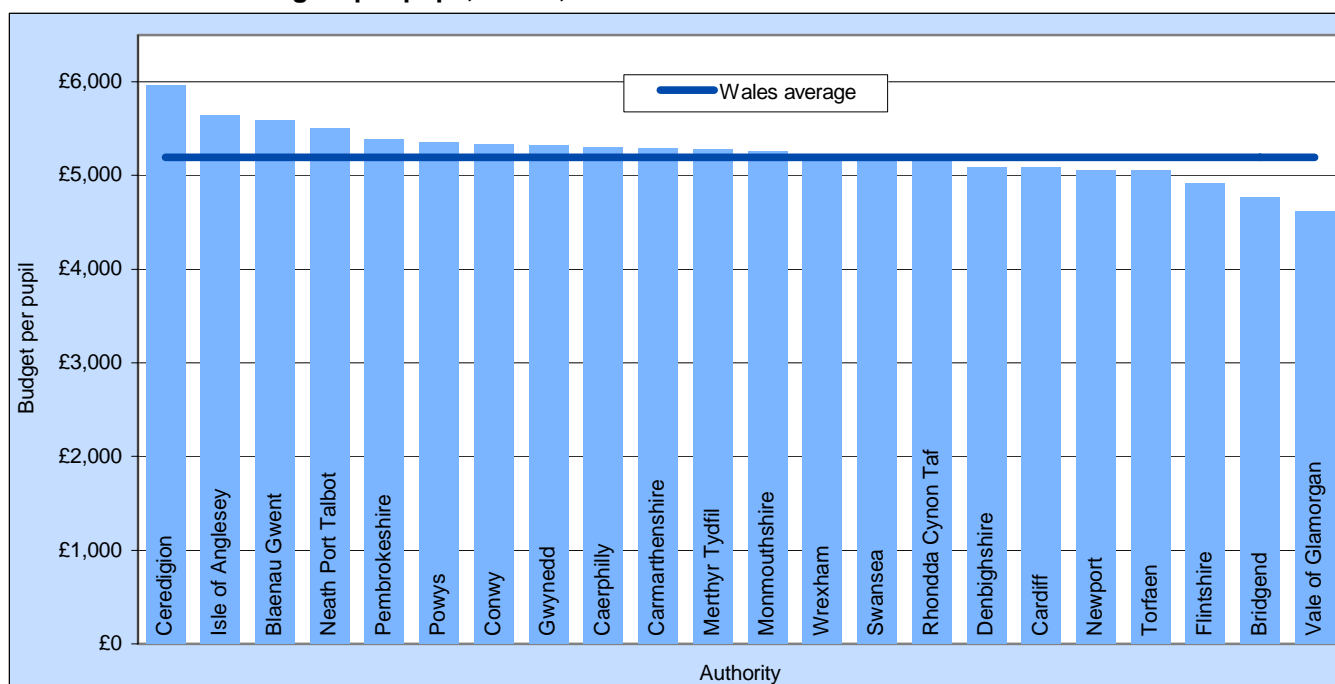


Table 2 shows education budgets for Wales and English regions for 2008-09. 8 regions had budgets above the England average and 6 regions below.

Table 2 - Education budgets, Wales and English regions, 2008-09 (a)

Region	£ million	£ per pupil (b)	Difference from Wales average
Wales	2,401	5,192	
Regional averages in England			
East of England	4,338	5,313	2.3%
East Midlands	3,449	5,373	3.5%
Inner London	2,824	8,085	55.7%
Outer London	4,199	6,109	17.7%
North East (met)	907	5,863	12.9%
North East (non-met)	1,254	5,806	11.8%
North West (met)	3,399	5,720	10.2%
North West (non-met)	2,345	5,478	5.5%
South East	6,167	5,448	4.9%
South West	3,755	5,404	4.1%
West Midlands (met)	2,530	5,886	13.4%
West Midlands (non-met)	2,059	5,229	0.7%
Yorkshire (met)	2,948	5,679	9.4%
Yorkshire (non-met)	1,305	5,544	6.8%
Authority type averages in England			
London Boroughs	7,023	6,775	30.5%
Metropolitan Districts	9,785	5,762	11.0%
Unitary Authorities	7,125	5,613	8.1%
Shire Counties	17,544	5,334	2.7%
Isles of Scilly	4	13,429	158.7%
England	41,480	5,687	9.6%
England excluding London	34,457	5,507	6.1%

(a) The education expenditure figures in this table are on a 'current basis', that is they include expenditure financed by specific government grants including DCELLS / LSC grant for post 16 provision. The figures include expenditure on schools services, LEA central costs, mandatory student awards, inter-authority education recoupment, nursery schools and adult and youth education.

(b) The pupil numbers used in this table include full time equivalents for nursery, primary, secondary, special and pupil referral units.

Chart 3: Education budget per pupil, Wales and English regions, 2008-09

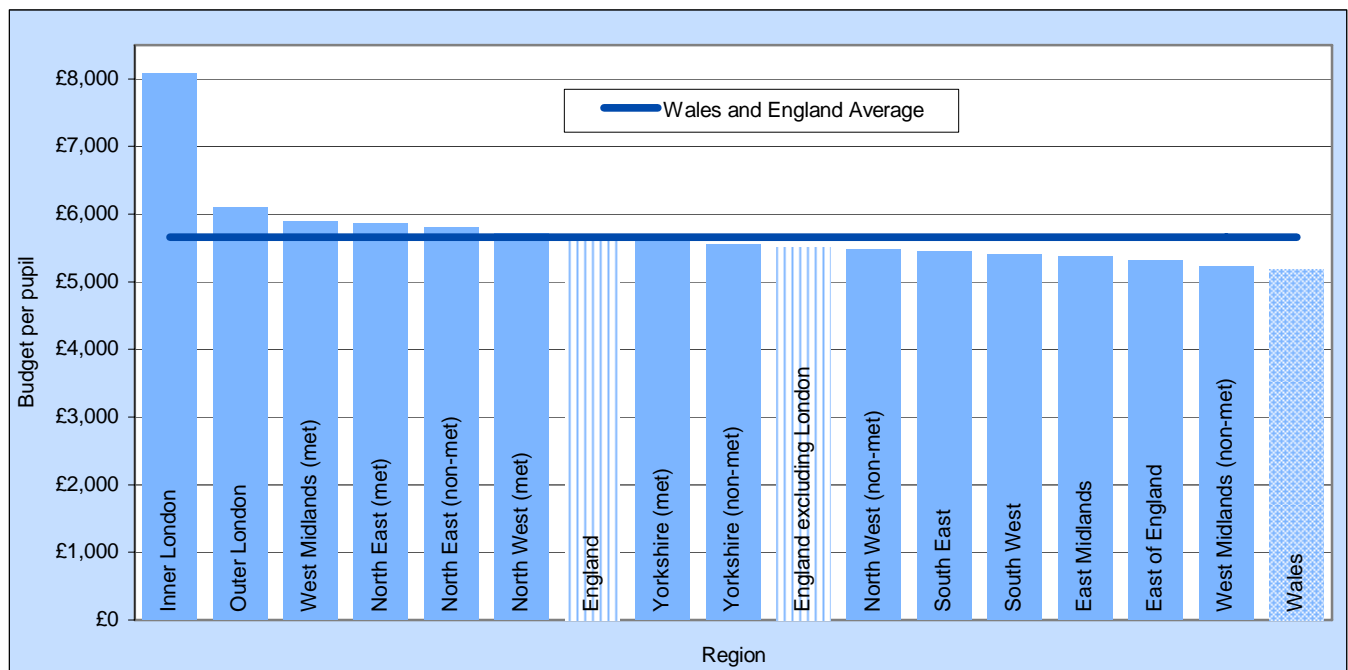


Table 3 shows the trends in spend on education, pupil numbers, spend per pupil and spend per head of population from 1999-00 to 2008-09.

Table 3 - Education spend, Wales and England (a)

	1999-00	2000-01	2001-02	2002-03	2003-04	2004-05	2005-06	2006-07	2007-08	2008-09 (b)
Total spend										
Wales (£m)	1,407	1,517	1,651	1,739	1,921	2,011	2,122	2,213	2,326	2,401
% increase on previous year		7.8%	8.8%	5.3%	10.5%	4.7%	5.5%	4.3%	5.1%	3.2%
England (£m)	22,164	23,747	26,121	28,405	31,293	33,291	36,020	37,942	40,135	41,480
% increase on previous year		7.1%	10.0%	8.7%	10.2%	6.4%	8.2%	5.3%	5.8%	3.4%
Wales as a % of England	6.3%	6.4%	6.3%	6.1%	6.1%	6.0%	5.9%	5.8%	5.8%	5.8%
England excl. London (£m)	18,563	19,884	21,852	23,737	26,099	27,748	29,977	31,527	33,306	34,457
% increase on previous year		7.1%	9.9%	8.6%	10.0%	6.3%	8.0%	5.2%	5.6%	3.5%
Full time equivalent pupil numbers (c)										
Wales ('000)	491	491	490	488	486	481	476	470	465	462
% increase on previous year		0.0%	-0.2%	-0.3%	-0.5%	-0.9%	-1.2%	-1.2%	-1.2%	-0.5%
England ('000)	7,576	7,604	7,610	7,604	7,580	7,534	7,477	7,406	7,327	7,293
% increase on previous year		0.4%	0.1%	-0.1%	-0.3%	-0.6%	-0.8%	-0.9%	-1.1%	-0.5%
England excl. London ('000)	6,550	6,568	6,569	6,561	6,536	6,490	6,432	6,364	6,289	6,257
% increase on previous year		0.3%	0.0%	-0.1%	-0.4%	-0.7%	-0.9%	-1.1%	-1.2%	-0.5%
Spend per pupil										
Wales (£ per pupil)	2,868	3,092	3,372	3,562	3,955	4,178	4,459	4,706	5,004	5,192
% increase on previous year		7.8%	9.1%	5.6%	11.0%	5.6%	6.7%	5.6%	6.3%	3.8%
England (£ per pupil)	2,926	3,123	3,432	3,735	4,128	4,419	4,817	5,123	5,478	5,687
% increase on previous year		6.7%	9.9%	8.8%	10.5%	7.0%	9.0%	6.3%	6.9%	3.8%
England excl. London (£ per pupil)	2,834	3,027	3,327	3,618	3,993	4,275	4,660	4,954	5,296	5,507
% increase on previous year		6.8%	9.9%	8.8%	10.4%	7.1%	9.0%	6.3%	6.9%	4.0%
England over Wales (£ per pupil)	58	31	61	174	173	241	359	417	474	496
England over Wales (% difference)	2.0%	1.0%	1.8%	4.9%	4.4%	5.8%	8.1%	8.9%	9.5%	9.6%
Spend per head of population (d)										
Wales (£ per head)	485	522	567	596	655	683	718	746	780	806
England (£ per head)	452	482	528	572	628	664	714	747	786	812
% difference from Wales	-6.8%	-7.6%	-6.9%	-3.9%	-4.2%	-2.7%	-0.6%	0.2%	0.7%	0.8%
England excl. London (£ per head)	443	473	519	561	614	649	697	729	765	791
% difference from Wales	-8.6%	-9.3%	-8.6%	-5.7%	-6.3%	-4.9%	-3.0%	-2.3%	-2.0%	-1.8%
England over Wales (£ per head)	-33	-39	-39	-23	-28	-18	-5	1	5	6
England over Wales (% difference)	-6.8%	-7.6%	-6.9%	-3.9%	-4.2%	-2.7%	-0.6%	0.2%	0.7%	0.8%

(a) The education expenditure figures in this table are on a 'current basis', that is they include expenditure financed by specific government grants, including DCELLS / LSC grant for post 16 provision. The figures include expenditure on schools services, LEA central costs, mandatory student awards, inter-authority education recoupment, nursery schools and adult and youth education.

(b) The expenditure figures are based on outturn data, with the exception of 2008-09 which are budgeted.

(c) The pupil numbers used in this table include full time equivalents for nursery, primary, secondary, special and pupil referral units.

(d) Based on the Registrar General's mid-year estimates of population.

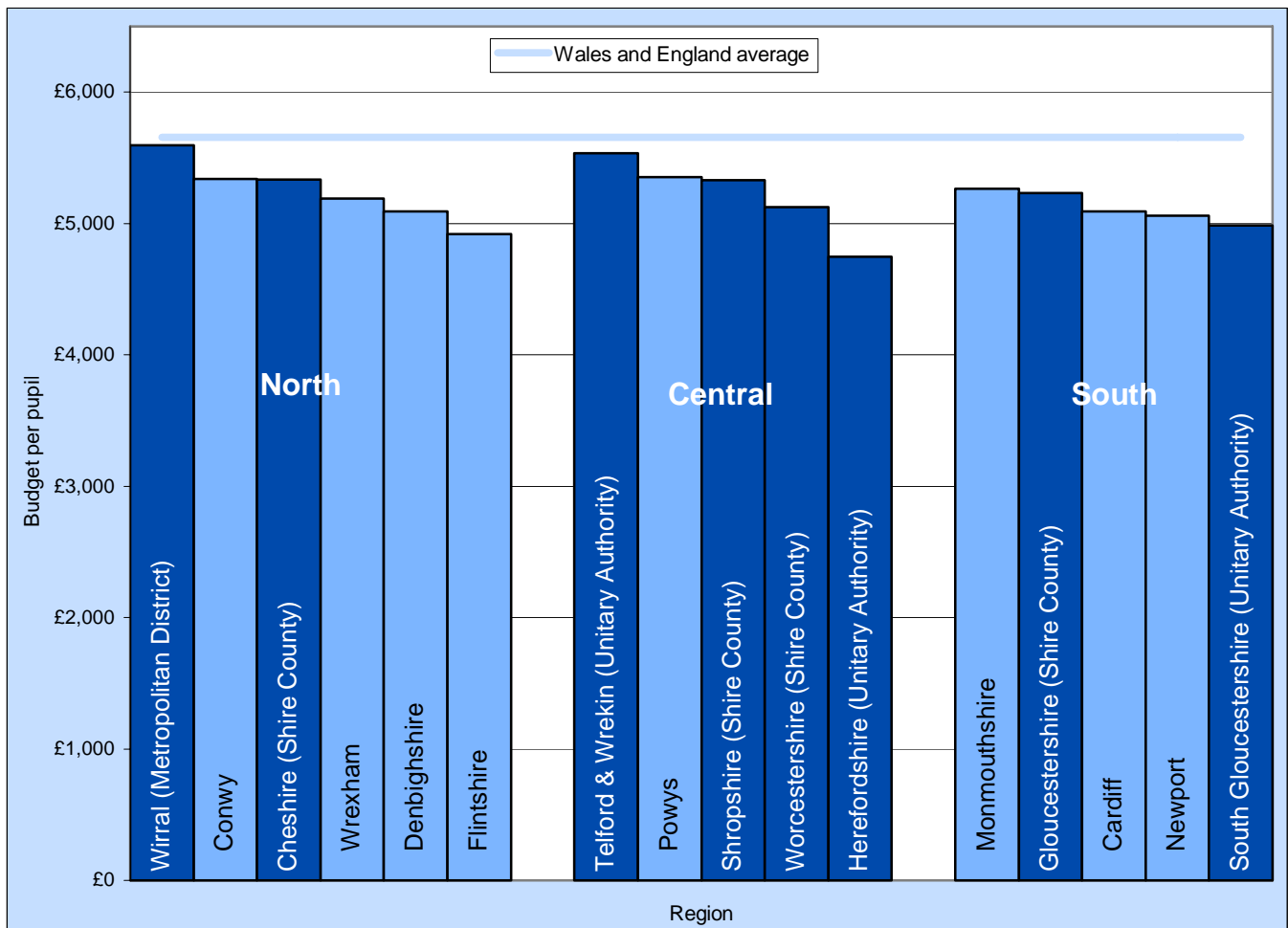
Table 4 provides a comparison of expenditure between border authorities.

Table 4 - Education budget per pupil, authorities on the Wales-England border, 2008-09 (a)

Region	£ per pupil
North	
Cheshire (Shire County)	5,336
Wirral (Metropolitan District)	5,597
Conwy	5,340
Denbighshire	5,091
Flintshire	4,921
Wrexham	5,189
Central	
Herefordshire (Unitary Authority)	4,748
Shropshire (Shire County)	5,331
Telford & Wrekin (Unitary Authority)	5,537
Worcestershire (Shire County)	5,122
Powys	5,355
South	
Gloucestershire (Shire County)	5,233
South Gloucestershire (Unitary Authority)	4,986
Monmouthshire	5,265
Newport	5,057
Cardiff	5,090

(a) The education expenditure figures in this table are on a 'current basis', that is they include expenditure financed by specific government grants including DCELLS / LSC grant for post 16 provision. The figures include expenditure on schools services, LEA central costs, mandatory student awards, inter-authority education recoupment, nursery schools and adult and youth education. The pupil numbers used in this table include full time equivalents for nursery, primary, secondary, special and pupil referral units.

Chart 4: Education budget per pupil, authorities on the Wales-England border, 2008-09



Technical notes

Data sources

The main sources of financial information are the Revenue Account budget returns (RAS52) and Revenue Outturn returns (RO1).

The numbers of pupils are taken from the annual schools census taken at January each year. Generally, weighted averages are then used to arrive at financial year estimates of pupil numbers, apart from 2008-09 where unadjusted January 2008 census numbers are used.

Quality

- Total education spend is on a 'current basis', i.e. it includes expenditure financed by specific government grants and by grants from DCELLS in Wales and LSC in England. The figures include expenditure on inter-authority education recoupment, nursery schools, mandatory student awards, and adult and youth education.
- Education spend per pupil. This is not a measure of 'schools' expenditure per pupil as the only way of making a consistent comparison over time with England is to include adult and youth education expenditure and use overall education spend. The reason for calculating education spend per pupil is therefore solely for the purpose of making a comparison with England. The pupil numbers used include full time equivalents for nursery, primary, secondary, special and pupil referral units.
- Education spend per head of population. Uses the total education spend divided by the total population of Wales and England respectively.

Historical trend in spend on education services

The English regions used for the comparison are sub-divisions of the 9 standard regions. For the purposes of this work, London has been split to show inner and outer London separately. Other regions have been split into metropolitan and non-metropolitan components. Thus the North West region is divided into the metropolitan areas - Liverpool and Manchester and the non-metropolitan areas - Cumbria, Lancashire, Cheshire etc.

Further information

A report on budgets set by Welsh local authorities for education services in 2008-09 was published in July 2008. This can be downloaded from: <http://wales.gov.uk/topics/statistics/theme/loc-gov/educa/>

The standard sources are as follows:

- <http://wales.gov.uk/topics/statistics/publications/wlgf2008/> - Welsh Local Government Financial Statistics, 2008
- www.communities.gov.uk - England education expenditure
- www.dfes.gov.uk - England pupil numbers
- www.statswales.wales.gov.uk - Welsh education expenditure and Mid-Year Estimates of population

Rounding

In tables where figures have been rounded to the nearest final digit there may be an apparent discrepancy between the sum of the constituent items and the total shown.

If you have any comments or require further information or copies, please contact:

Local Government Financial Statistics Unit
Statistical Directorate
Welsh Assembly Government
Cathays Park
Cardiff
CF10 3NQ

Email: stats.finance@wales.gsi.gov.uk

Tel: 029 2082 3519

Fax: 029 2082 5350