

ACW MAJOR POTENTIAL CAPITAL BUILDING PROJECTS

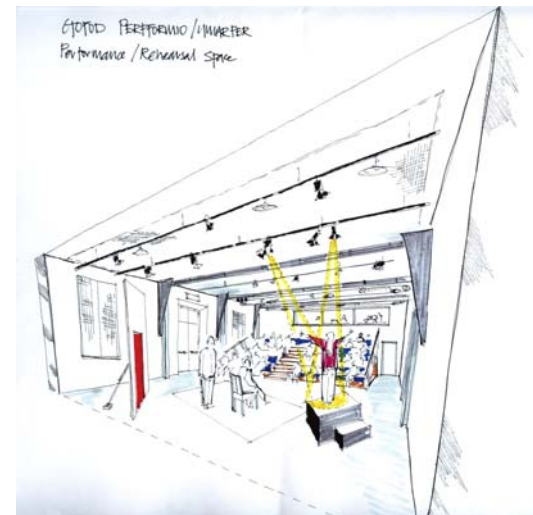
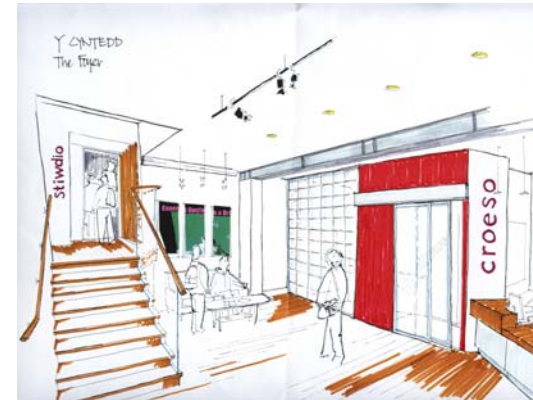
(In Development 2005 to 2009)



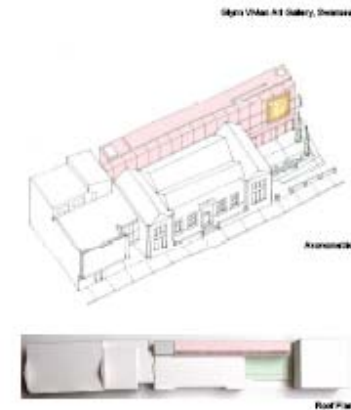
TORCH THEATRE



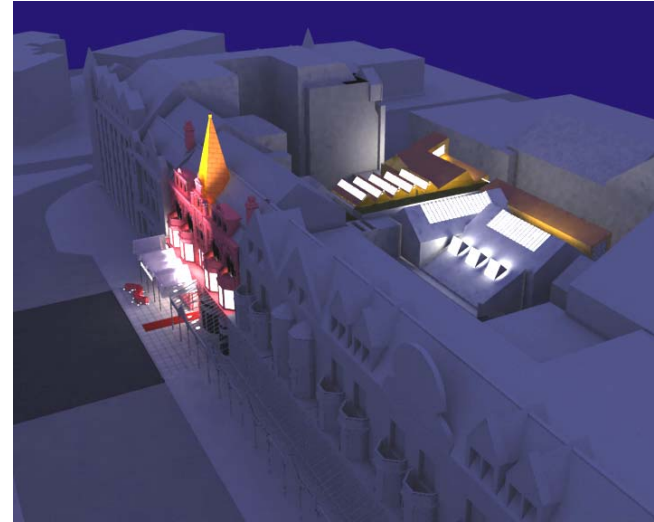
ARAD GOCH



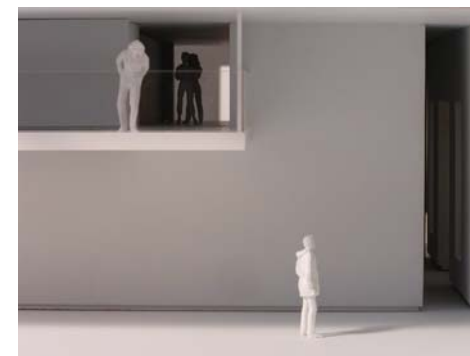
GLYNN VIVIAN GALLERY, SWANSEA



ORIEL MOSTYN



FFOTOGALLERY



RUTHIN CRAFT CENTRE



171/1250

FUTURE OF THE LOTTERY

- Lottery Sales Bottom Out
- DCMS Review
 - Public Consultation
 - Current Good Causes Likely to Continue
 - Increased Lottery Share for Wales?



Awarded funds from

The National Lottery[®]

Dyfarnwyd arian

Y Loteri Genedlaethol

MAINSTREAMING THE ARTS

(1)

Challenges

- More Difficult Public Expenditure Climate
- Possible Olympics Lottery Impact

Potential

- Key Delivery Vehicle Across Government Priorities
- The Cross-Cutting Imperative

MAINSTREAMING THE ARTS

(2)

- Cultural Planning
- The Yeast, Not the Icing

ARTS IN EDUCATION

- Curriculum Review & Guidance
- Learning from the Best
- Halting the Decline at Primary/Secondary Transition
- Welsh Texts in Both Languages
- Workload Initiative
- Teacher training

ARTS & HEALTH

- Arts for Well-being
- Art in Hospitals
- Arts as Therapy
- Need for Strategy
- Conference Planned for Early 2006

ECONOMIC DEVELOPMENT

- Cultural Tourism
- Film & Theatre
- Art & Design
- Crafts
- Galeri & Mwldan – Art and Industry Side by Side

REGENERATION

- Culture Committee Report
- WMC
- Galeri, Caernarfon/Mwldan, Cardigan
- Blaenau Gwent
- Valleys Kids