

ANALYSIS OF LOCAL AUTHORITY BUDGETS FOR SCHOOL SERVICES, 2002-03

Table 1 Local authority budgets for school services in Wales, 2002-03 (a)

	Budget per pupil		Difference on Wales average		Memorandum: All authority expenditure per person
	Overall	Delegated (b)	Overall	Delegated (b)	
Isle of Anglesey	£3,596	£2,680	6.5%	4.5%	£1,495
Gwynedd	£3,577	£2,695	5.9%	5.0%	£1,501
Conwy	£3,347	£2,527	-0.9%	-1.5%	£1,442
Denbighshire	£3,089	£2,408	-8.5%	-6.2%	£1,500
Flintshire	£3,084	£2,293	-8.7%	-10.6%	£1,262
Wrexham	£3,335	£2,423	-1.2%	-5.5%	£1,252
Powys	£3,753	£2,764	11.2%	7.7%	£1,471
Ceredigion	£3,981	£3,069	17.9%	19.6%	£1,379
Pembrokeshire	£3,607	£2,703	6.8%	5.3%	£1,489
Carmarthenshire	£3,701	£2,768	9.6%	7.9%	£1,415
Swansea	£3,309	£2,537	-2.0%	-1.1%	£1,435
Neath Port Talbot	£3,582	£2,785	6.1%	8.5%	£1,527
Bridgend	£3,210	£2,551	-4.9%	-0.6%	£1,393
Vale of Glamorgan	£3,051	£2,444	-9.6%	-4.7%	£1,340
Cardiff	£3,333	£2,565	-1.3%	0.0%	£1,472
Rhondda Cynon Taff	£3,303	£2,506	-2.2%	-2.3%	£1,511
Merthyr Tydfil	£3,514	£2,684	4.1%	4.6%	£1,587
Caerphilly	£3,279	£2,482	-2.9%	-3.3%	£1,400
Blaenau Gwent	£3,477	£2,540	3.0%	-1.0%	£1,550
Torfaen	£3,197	£2,459	-5.3%	-4.1%	£1,387
Monmouthshire	£3,208	£2,475	-5.0%	-3.5%	£1,228
Newport	£3,353	£2,479	-0.7%	-3.4%	£1,462
Wales	£3,377	£2,566	0.0%	0.0%	£1,431
Maximum	£3,981	£3,069	17.9%	19.6%	£1,587
Minimum	£3,051	£2,293	-9.6%	-10.6%	£1,228

(a) The figures for overall school expenditure in this table are on a "current" basis, that is they include expenditure financed by specific government grants. For 2002-03, these grants are GEST (£59m), Special Grant Reports No. 23 (£25m), No.8 (£18.7m) and No. 6 (£2m and £1.2m). The figures also include an additional £5.7m distributed as a specific grant under the Housing grants, Construction and Regeneration Act 1996. The figures for delegated budgets do not include any expenditure financed by specific government grants, as in most cases, whilst the funding is allocated to the schools, it does not form part of the delegated budget.

(b) Delegated budgets are recorded net of specific grants devolved to schools in Wales.

(c) Expenditure for the whole authority is also on a "current" basis.

ANALYSIS OF LOCAL AUTHORITY BUDGETS FOR SCHOOL SERVICES, 2002-03

Table 2 Regional budgets for school services in Wales and England, 2002-03 (a)

	Budget per pupil		Difference on Wales average		Memorandum: All authority expenditure per person (c)
	Overall	Delegated (b)	Overall	Delegated	
Wales	£3,377	£2,566	0.0%	0.0%	£1,431
Regional averages in England					
East	£3,288	£2,492	-2.6%	-2.9%	£1,118
East Midlands	£3,203	£2,353	-5.1%	-8.3%	£1,121
Inner London	£4,502	£3,237	33.3%	26.2%	£1,950
Outer London	£3,650	£2,755	8.1%	7.4%	£1,347
North East (met)	£3,348	£2,428	-0.9%	-5.4%	£1,406
North East (non-met)	£3,298	£2,397	-2.3%	-6.6%	£1,298
North West (met)	£3,405	£2,466	0.8%	-3.9%	£1,445
North West (non-met)	£3,296	£2,406	-2.4%	-6.2%	£1,213
South East	£3,303	£2,488	-2.2%	-3.0%	£1,146
South West	£3,192	£2,367	-5.5%	-7.8%	£1,114
West Midlands (met)	£3,452	£2,531	2.2%	-1.4%	£1,396
West Midlands (non-met)	£3,113	£2,320	-7.8%	-9.6%	£1,078
Yorkshire (met)	£3,309	£2,408	-2.0%	-6.2%	£1,246
Yorkshire (non-met)	£3,292	£2,423	-2.5%	-5.6%	£1,177
Authority type averages in England					
London Boroughs	£3,944	£2,921	16.8%	13.9%	-/-
Metropolitan Districts	£3,382	£2,461	0.2%	-4.1%	-/-
Unitary Authorities	£3,321	£2,477	-1.6%	-3.4%	-/-
Shire Counties	£3,225	£2,400	-4.5%	-6.5%	-/-
Isles of Scilly	£6,429	£3,864	90.4%	50.6%	-/-
Shire Authorities	£3,226	£2,400	-4.5%	-6.5%	-/-
England	£3,377	£2,499	0.0%	-2.6%	£1,256
England excluding London	£3,288	£2,432	-2.6%	-5.2%	£1,200
Wales and England	£3,377	£2,503	0.0%	-2.5%	£1,265

(a) The figures for overall school expenditure in this table are on a "current" basis, that is they include expenditure financed by specific government grants. In Wales, for 2002-03, these include GEST funding, Special Grant Reports No. 23, No.8, and No.6. In England the grants include the standards fund, school standards grant, teachers pay reform, and class size reduction. The figures for delegated budgets do not include any expenditure financed by specific government grants, as in most cases whilst the funding is allocated to the schools, it does not form part of the delegated budget.

(b) Delegated budgets are recorded net of specific grants devolved to schools in Wales. Therefore any comparison with England for delegated budgets must be on a net basis. As England make more funds available through devolved grants and less through budget allocation, LEAs in Wales appear to delegate a higher proportion of their overall school budgets than their English counterparts.

(c) Figures for England exclude Police and Fire as well as the Greater London Authority (which mainly covers police and fire itself). This does however, exclude some public transport expenditure from the England data, marginally affecting the England-Wales comparisons. Due to the differing structure of local authorities in Wales and England, it is not possible to show all authority expenditure per head by authority type on a basis consistent with that in Wales.

ANALYSIS OF LOCAL AUTHORITY BUDGETS FOR SCHOOL SERVICES, 2002-03

Table 3 Net current expenditure on school services in Wales and England from 1990-91 to 2002-03 (a)

	1990-1	1991-2	1992-3	1993-4	1994-5	1995-6	1996-7	1997-8	1998-9	1999-0	2000-1	2001-2 (b)	Memorandum: 2002-03 (c)
Amounts at outturn prices													
Wales													
Total spend (£M)	849.6	943.8	1,039.6	1,062.6	1,095.4	1,129.0	1,151.1	1,173.6	1,235.6	1,320.1	1,462.9	1,578.1	1,618.8
FTE pupils ('000)	458.5	462.0	467.8	473.7	479.8	484.6	487.6	489.7	490.5	490.7	490.6	489.6	489.6
Spend per pupil (£)	1,853	2,043	2,222	2,243	2,283	2,330	2,361	2,397	2,519	2,690	2,982	3,223	3,306
England													
Total spend (£M)	13,152.5	14,569.3	15,934.0	16,120.3	16,711.4	17,090.0	17,656.2	18,200.8	19,258.5	20,643.2	22,721.1	24,711	25,261.5
FTE pupils ('000)	6,877.3	6,947.3	7,059.9	7,138.3	7,230.6	7,337.7	7,416.2	7,479.7	7,532.8	7,575.1	7,604.4	7,609.9	7,609.9
Spend per pupil (£)	1,912	2,097	2,257	2,258	2,311	2,329	2,381	2,433	2,557	2,725	2,988	3,247	3,320
Amounts at constant 2001-02 prices													
Wales													
Total spend (£M)	1,164.5	1,219.3	1,300.9	1,297.7	1,320.2	1,323.0	1,307.5	1,293.1	1,325.0	1,382.2	1,497.5	1,578.1	1,579
Spend per pupil (£)	2,540	2,639	2,781	2,740	2,752	2,730	2,682	2,641	2,701	2,817	3,053	3,223	3,225
England													
Total spend (£M)	18,028.0	18,821.9	19,939.9	19,686.2	20,141.1	20,026.7	20,054.2	20,053.9	20,651.9	21,613.7	23,258.6	24,710.5	24,645.3
Spend per pupil (£)	2,621	2,709	2,824	2,758	2,786	2,729	2,704	2,681	2,742	2,853	3,059	3,247	3,239
Spend per pupil - difference of England average over Wales average													
Amount (£)	81	70	44	18	34	-1	22	40	40	36	6	24	13
Relative	3.2%	2.6%	1.6%	0.7%	1.2%	0.0%	0.8%	1.5%	1.5%	1.3%	0.2%	0.7%	0.4%
Cumulative increase on 1990-91 base at constant 2001-02 prices													
Wales													
Total spend (£M)		4.7%	11.7%	11.4%	13.4%	13.6%	12.3%	11.0%	13.8%	18.7%	28.6%	35.5%	35.6%
Spend per pupil (£)		3.9%	9.5%	7.9%	8.3%	7.5%	5.6%	4.0%	6.3%	10.9%	20.2%	26.9%	27.0%
England													
Total spend (£M)		4.4%	10.6%	9.2%	11.7%	11.1%	11.2%	11.2%	14.6%	19.9%	29.0%	37.1%	36.7%
Spend per pupil (£)		3.4%	7.7%	5.2%	6.3%	4.1%	3.2%	2.3%	4.6%	8.8%	16.7%	23.9%	23.5%
Cumulative increase in pupil full time equivalents from 1990-91 base													
Wales													
		0.8%	2.0%	3.3%	4.7%	5.7%	6.3%	6.8%	7.0%	7.0%	7.0%	6.8%	6.8%
England													
		1.0%	2.7%	3.8%	5.1%	6.7%	7.8%	8.8%	9.5%	10.1%	10.6%	10.7%	10.7%

(a) The expenditure figures in this table differ from those in tables 1 and 2 as they come from a different source, namely revenue outturn and revenue account budget returns, which are the only source providing a historical time-series. The main difference is the inclusion of services for the under 5s within schools' services in this table - these services are excluded from the figures behind tables 1 and 2. It is not possible to exclude services for under 5s for most of the years in this table. The figure for 2001-2 includes grant income of £140m for provision for three year olds in England. Equivalent funding for Wales was introduced in 2002-3.

(b) The 2001-02 total spend figure for England is budgeted and is taken from the General fund revenue account budget estimates return.

(c) Figures for 2002-03 are budgeted. The Wales figure is taken from the revenue account (RA) budget form includes £89.597m for ELWa payments in respect of 6th form colleges. The England figure is taken from the Section 52 budget statement and has £1,292m added back in respect of Learning Skills Council (LSC) sixth form allocations.

ANALYSIS OF LOCAL AUTHORITY BUDGETS FOR SCHOOL SERVICES, 2002-03

Table 4 Overview of budgets on the Wales England border for 2002-03

	Overall current budget per pupil	Delegated net budget per pupil	Total revenue budget per person (a)	FTE pupils ('000)	Average school size			Pupil teacher ratio			Free school meal entitlement
					Primary (b)	Secondary	Special	Primary (b)	Secondary	Special	
North											
Cheshire SC	£3,227	£2,384	£913	105.3	198	1,034	68	21.9	16.4	6.0	10.9%
Wirral MD	£3,364	£2,424	£1,471	53.7	273	1,057	86	21.4	15.3	6.1	27.8%
Conwy	£3,347	£2,527	£1,442	17.3	149	1,092	111	21.5	17.1	8.2	16.3%
Denbighshire	£3,089	£2,408	£1,500	16.2	157	936	136	22.3	17.0	7.8	15.5%
Flintshire	£3,084	£2,293	£1,262	25.0	188	874	87	22.5	16.6	8.4	11.5%
Wrexham	£3,335	£2,423	£1,252	18.8	155	706	225	21.6	16.2	7.8	14.2%
Central											
Herefordshire UA	£3,186	£2,239	£1,109	24.1	163	720	44	21.2	16.7	6.5	7.5%
Shropshire SC	£3,166	£2,292	£869	40.1	152	816	95	22.7	16.6	5.2	9.1%
Telford & Wrekin U/	£3,170	£2,446	£1,276	25.9	225	799	120	23.5	16.7	7.4	20.2%
Worcestershire SC	£3,087	£2,319	£826	80.5	198	701	96	22.3	17.8	6.6	9.8%
Powys	£3,753	£2,764	£1,471	20.5	106	678	51	19.4	14.8	6.0	10.3%
South											
Gloucestershire SC	£3,126	£2,291	£879	85.9	182	930	73	21.3	16.9	6.1	8.8%
South Glous UA	£3,107	£2,360	£1,030	40.1	238	1,177	98	23.3	16.5	7.2	7.7%
Monmouthshire	£3,208	£2,475	£1,228	13.2	173	1,440	57	22.9	16.8	5.0	10.3%
Newport	£3,353	£2,479	£1,462	24.6	236	1,326	86	22.3	16.8	7.4	22.9%
Cardiff	£3,333	£2,565	£1,472	50.8	254	1,094	68	20.4	16.3	6.1	18.9%
Averages											
Wales	£3,377	£2,566	£1,431	488.6	164	934	85	21.0	16.4	6.7	18.5%
English averages											
Metropolitan District	£3,382	£2,461	-/-	1,821.4	263	1,017	83	22.0	16.0	6.2	22.7%
Shire County	£3,225	£2,400	-/-	3,460.3	193	891	78	22.1	16.7	6.6	10.2%
Unitary Authority	£3,321	£2,477	-/-	1,275.6	247	974	88	22.1	16.2	6.6	16.9%
England	£3,377	£2,499	£1,256	7,597.0	229	944	80	22.0	16.3	6.4	16.4%

(a) This refers to gross revenue expenditure on **all** services provided by the local authority.

The £ per head calculations use the Registrar general's 2001 mid-year estimates of population.

(b) Includes nursery.

Local Government Finance Statistics Unit
National Assembly for Wales
March 2003

ANALYSIS OF LOCAL AUTHORITY BUDGETS FOR SCHOOL SERVICES, 2002-03

Table 5 Background information for Welsh local education authorities, January 2002 (a)

	FTE pupils ('000)	Average school size			Pupil teacher ratio			Free school meal entitlement
		Primary (b)	Secondary	Special	Primary (b)	Secondary	Special	
Isle of Anglesey	10.6	109	962	95	19.8	15.4	7.3	18.4%
Gwynedd	17.9	95	554	45	19.4	14.6	6.9	15.3%
Conwy	17.3	149	1,092	111	21.5	17.1	8.2	16.3%
Denbighshire	16.2	157	936	136	22.3	17.0	7.8	15.5%
Flintshire	25.0	188	874	87	22.5	16.6	8.4	11.5%
Wrexham	18.8	155	706	225	21.6	16.2	7.8	14.2%
Powys	20.5	106	678	51	19.4	14.8	6.0	10.3%
Ceredigion	10.6	72	727	.	17.5	15.3	.	12.2%
Pembrokeshire	19.2	136	1,035	63	20.8	16.2	7.0	17.8%
Carmarthenshire	27.9	116	822	62	19.1	16.2	5.6	17.8%
Swansea	35.6	215	1,101	75	20.7	16.7	5.3	20.9%
Neath Port Talbot	22.0	171	850	53	19.1	15.7	5.8	22.1%
Bridgend	22.9	195	1,097	167	22.6	16.9	6.4	19.9%
Vale of Glamorgan	21.5	232	1,145	78	21.3	17.1	5.7	12.0%
Cardiff	50.8	254	1,094	68	20.4	16.3	6.1	18.9%
Rhondda Cynon Taff	43.4	164	1,022	83	21.9	16.9	7.7	25.2%
Merthyr Tydfil	10.9	176	947	143	21.2	16.3	7.9	29.1%
Caerphilly	30.7	197	825	132	22.2	16.5	6.9	20.8%
Blaenau Gwent	11.9	198	820	51	21.5	16.4	4.9	26.2%
Torfaen	17.1	212	990	73	22.1	17.3	6.0	19.8%
Monmouthshire	13.2	173	1,440	57	22.9	16.8	5.0	10.3%
Newport	24.6	236	1,326	86	22.3	16.8	7.4	22.9%
Wales	488.6	164	934	85	21.0	16.4	6.7	18.5%
Maximum	50.8	254	1,440	225	22.9	17.3	8.4	29.1%
Minimum	10.6	72.0	554	45	17.5	14.6	4.9	10.3%

(a) This table shows information based on pupil numbers, school numbers, teacher numbers and entitlement to free school meals for nursery, primary, secondary and special schools, but excludes information for pupil referral units.

(b) Includes nursery.

Local Government Finance Statistics Unit
National Assembly for Wales
March 2003

ANALYSIS OF LOCAL AUTHORITY BUDGETS FOR SCHOOL SERVICES, 2002-03

Table 6 Background information for Wales and the English regions, January 2002 (a)

	Number of LEAs	FTE pupils ('000)	Average school size			Pupil teacher ratio			Free school meal entitlement
			Primary (b)	Secondary	Special	Primary (b)	Secondary	Special	
Wales	22	488.6	164	934	85	21.0	16.4	6.7	18.5%
Regional averages in England									
East	10	832.7	208	885	84	22.0	16.4	6.7	11.1%
East Midlands	9	662.9	205	902	68	22.8	16.7	6.4	12.8%
Inner London	14	359.9	296	950	64	20.1	14.7	5.5	38.4%
Outer London	19	679.5	324	1,029	85	21.7	15.8	6.2	18.4%
North East (met)	5	170.4	248	960	90	21.6	15.8	6.5	23.7%
North East (non-met)	7	237.8	199	743	89	21.8	16.7	7.5	19.8%
North West (met)	15	649.9	257	1,002	77	22.0	15.8	6.1	24.5%
North West (non-met)	7	458.5	191	926	74	22.0	16.3	6.5	15.1%
South East	19	1,153.6	229	973	84	21.8	16.4	6.4	9.9%
South West	16	719.0	195	959	77	22.2	16.9	6.2	10.8%
West Midlands (met)	7	450.9	293	977	94	22.0	16.0	6.2	23.7%
West Midlands (non-met)	7	415.5	199	820	94	22.5	17.0	7.1	11.9%
Yorkshire (met)	9	550.2	253	1,092	79	22.3	16.3	6.3	19.5%
Yorkshire (non-met)	6	256.2	190	963	73	22.5	16.6	6.6	13.1%
Authority type averages in England									
London Boroughs	33	1,039.4	313	1,003	76	21.1	15.5	5.9	25.3%
Metropolitan Districts	36	1,821.4	263	1,017	83	22.0	16.0	6.2	22.7%
Unitary Authorities	46	1,275.6	247	974	88	22.1	16.2	6.6	16.9%
Shire Counties	34	3,460.3	193	891	78	22.1	16.7	6.6	10.2%
Shire Authorities	35	3,460.6	193	890	78	22.1	16.7	6.6	10.2%
England	150	7,597.0	229	944	80	22.0	16.3	6.4	16.4%
England excluding London	117	6,557.7	219	936	81	22.1	16.4	6.4	15.0%
Wales and England	172	8,085.6	224	944	81	21.9	16.3	6.4	16.5%

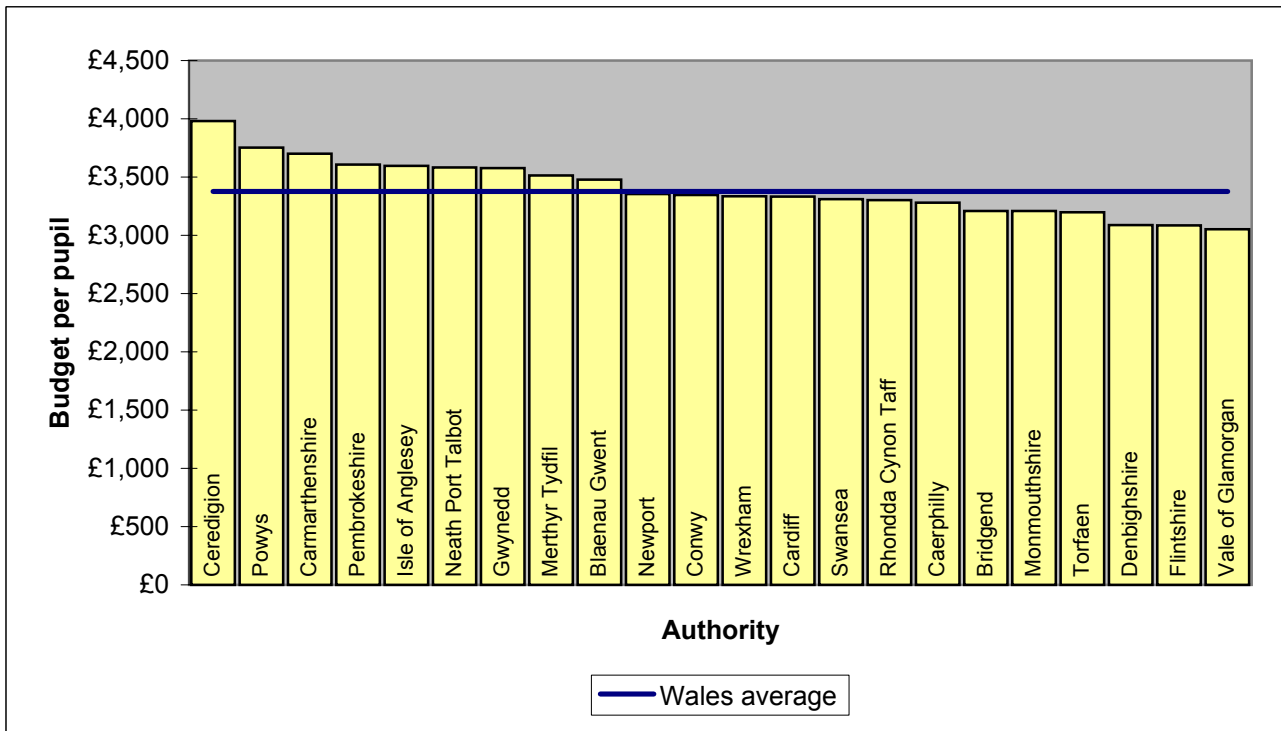
(a) This table shows information based on pupil numbers, school numbers, teacher numbers and entitlement to free school meals for nursery, primary, secondary and special schools, but excludes information for pupil referral units.

(b) Includes nursery.

Local Government Finance Statistics Unit
National Assembly for Wales
March 2003

ANALYSIS OF LOCAL AUTHORITY BUDGETS FOR SCHOOL SERVICES, 2002-03

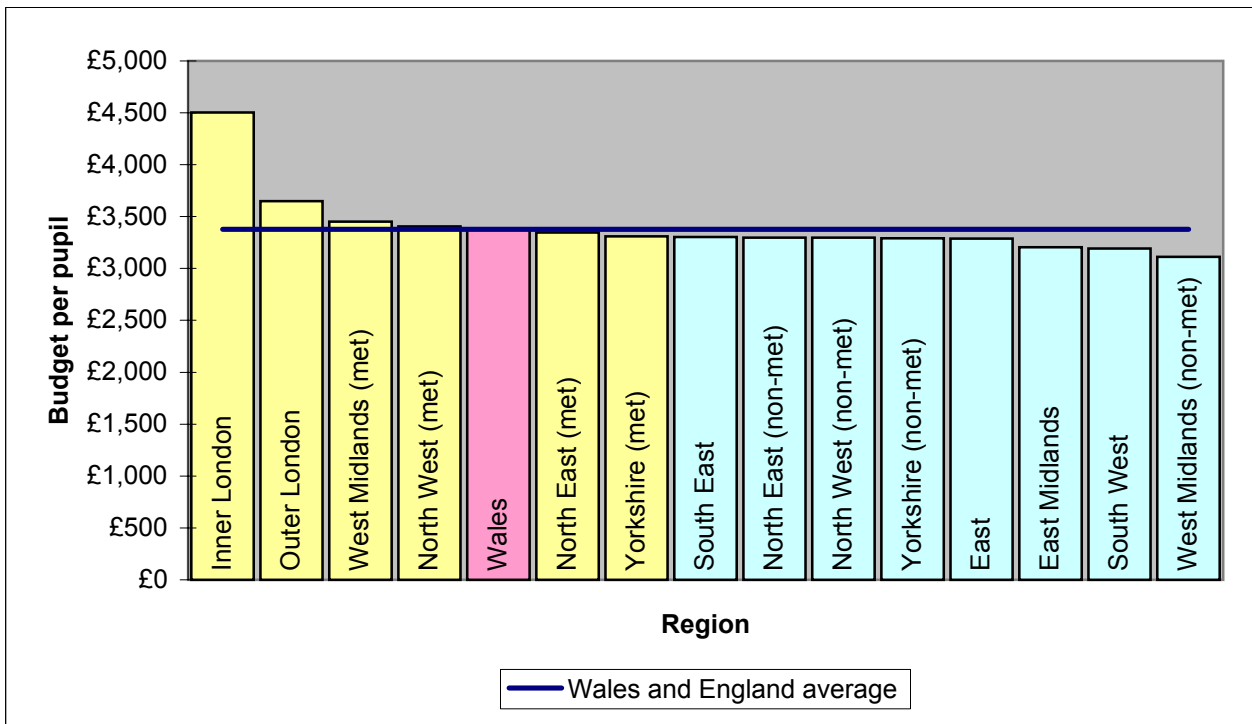
Chart 1 Local authority budget per pupil in Wales, 2002-03



Local Government Finance Statistics Unit
National Assembly for Wales
March 2003

ANALYSIS OF LOCAL AUTHORITY BUDGETS FOR SCHOOL SERVICES, 2002-03

Chart 2 Regional average budget per pupil in Wales and England, 2002-03



Local Government Finance Statistics Unit
National Assembly for Wales
March 2003

ANALYSIS OF LOCAL AUTHORITY BUDGETS FOR SCHOOL SERVICES, 2002-03

Chart 3a Historical trend in spend per pupil in Wales and England (amounts at outturn prices) (a)

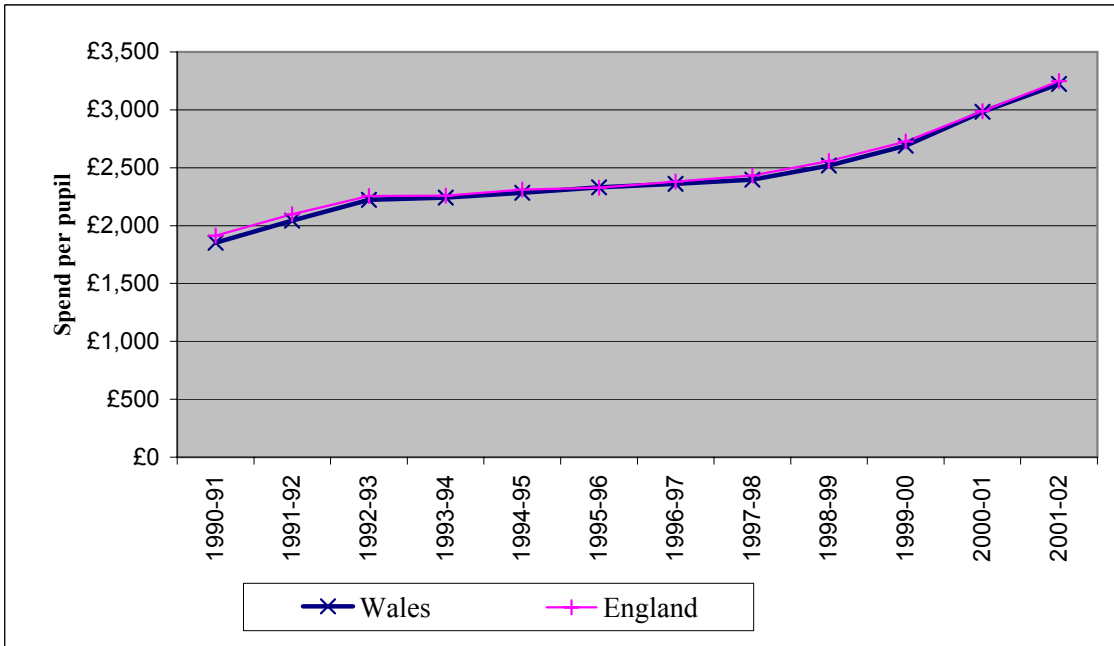
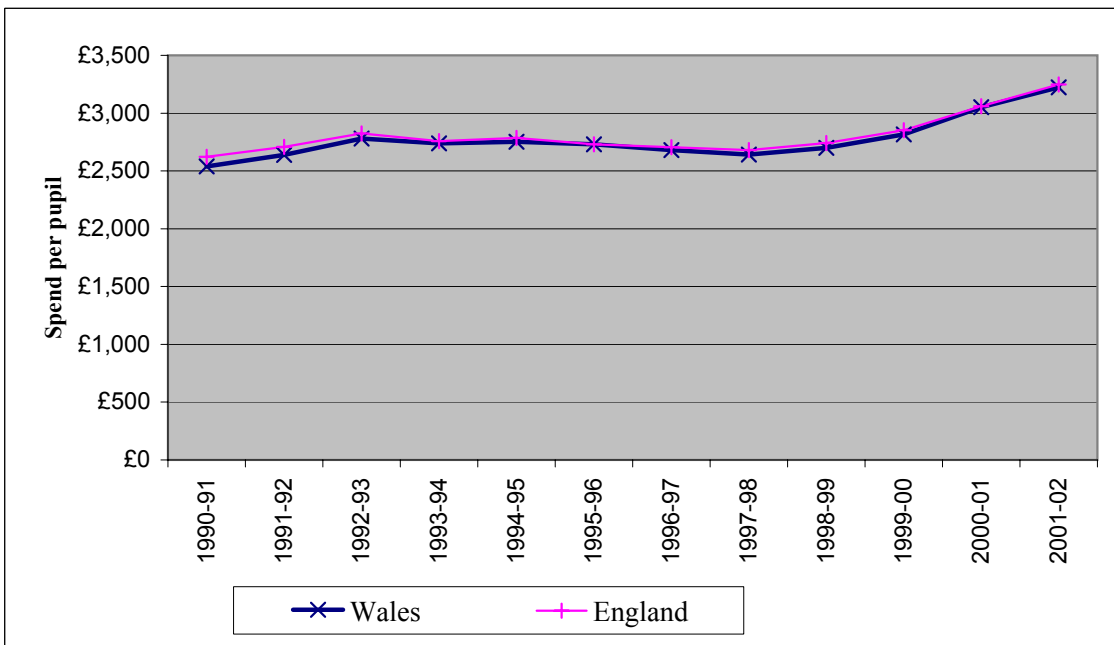


Chart 3b Historical trend in spend per pupil in Wales and England (amounts at constant 2001-02 prices) (a)



(a) The historical trend is based on actual outturn data, with the exception of the total spend in England for 2001-02 which is based on budget figures.