

## ANALYSIS OF LOCAL AUTHORITY BUDGETS FOR SCHOOL SERVICES, 2001-02

**Table 1 Local authority budgets for school services in Wales, 2001-02 (a)**

	Budget per pupil		All authority expenditure per person (c)	Difference on Wales average		
	Overall	Delegated (b)		Overall	Delegated(b)	Authority
Isle of Anglesey	£3,321	£2,530	£1,453	5.9%	4.4%	9.8%
Gwynedd	£3,372	£2,573	£1,414	7.6%	6.2%	6.8%
Conwy	£3,104	£2,374	£1,279	-1.0%	-2.0%	-3.4%
Denbighshire	£2,937	£2,275	£1,399	-6.3%	-6.1%	5.7%
Flintshire	£2,850	£2,195	£1,178	-9.1%	-9.4%	-11.0%
Wrexham	£3,087	£2,273	£1,219	-1.5%	-6.2%	-7.9%
Powys	£3,515	£2,517	£1,378	12.1%	3.9%	4.1%
Ceredigion	£3,766	£2,913	£1,364	20.2%	20.2%	3.0%
Pembrokeshire	£3,379	£2,560	£1,349	7.8%	5.7%	1.9%
Carmarthenshire	£3,481	£2,637	£1,375	11.1%	8.8%	3.9%
Swansea	£3,160	£2,424	£1,308	0.8%	0.1%	-1.2%
Neath Port Talbot	£3,352	£2,631	£1,423	6.9%	8.6%	7.5%
Bridgend	£3,016	£2,379	£1,295	-3.8%	-1.8%	-2.2%
Vale of Glamorgan	£2,833	£2,255	£1,208	-9.6%	-6.9%	-8.8%
Cardiff	£3,004	£2,395	£1,268	-4.2%	-1.1%	-4.2%
Rhondda Cynon Taff	£3,040	£2,376	£1,375	-3.0%	-1.9%	3.9%
Merthyr Tydfil	£3,159	£2,503	£1,546	0.8%	3.3%	16.8%
Caerphilly	£3,039	£2,362	£1,322	-3.0%	-2.5%	-0.1%
Blaenau Gwent	£3,149	£2,401	£1,425	0.5%	-0.9%	7.7%
Torfaen	£2,960	£2,363	£1,345	-5.6%	-2.5%	1.6%
Monmouthshire	£3,048	£2,371	£1,112	-2.7%	-2.2%	-16.0%
Newport	£3,020	£2,361	£1,349	-3.6%	-2.6%	1.9%
<b>Wales</b>	<b>£3,134</b>	<b>£2,423</b>	<b>£1,324</b>	<b>0.0%</b>	<b>0.0%</b>	<b>0.0%</b>
Maximum	£3,766	£2,913	£1,546	20.2%	20.2%	16.8%
Minimum	£2,833	£2,195	£1,112	-9.6%	-9.4%	-16.0%

- (a) The figures for overall school expenditure in this table are on a "current" basis, that is they include expenditure financed by specific government grants. For 2001-02, these grants are GEST (£55m), Special Grant Reports No. 4 (£26m), No.8 (£15m), and No.14 (£2m). The figures for delegated budgets do not include any expenditure financed by specific government grants, as in most cases whilst the funding is allocated to the schools, it does not form part of the delegated budget
- (b) Delegated budgets are recorded net of specific grants devolved to schools in Wales.
- (c) Expenditure for the whole authority is also on a "current" basis.

**ANALYSIS OF LOCAL AUTHORITY BUDGETS FOR SCHOOL SERVICES, 2001-02**

**Table 2 Regional budgets for school services in Wales and England, 2001-02 (a)**

	Budget per pupil		All authority expenditure per person (c)	Difference on Wales average		
	Overall	Delegated (b)		Overall	Delegated	Authority
<b>Wales</b>	<b>£3,134</b>	<b>£2,423</b>	<b>£1,324</b>	<b>0.0%</b>	<b>0.0%</b>	<b>0.0%</b>
<b>Regional averages in England</b>						
East	£3,106	£2,335	£1,073	-0.9%	-3.6%	-18.9%
East Midlands	£3,014	£2,227	£1,090	-3.8%	-8.1%	-17.6%
Inner London	£4,205	£3,053	£1,833	34.1%	26.0%	38.5%
Outer London	£3,421	£2,597	£1,301	9.1%	7.2%	-1.7%
North East (met)	£3,117	£2,291	£1,326	-0.6%	-5.4%	0.1%
North East (non-met)	£3,127	£2,285	£1,250	-0.2%	-5.7%	-5.6%
North West (met)	£3,205	£2,335	£1,389	2.3%	-3.6%	4.9%
North West (non-met)	£3,125	£2,268	£1,181	-0.3%	-6.4%	-10.8%
South East	£3,097	£2,332	£1,082	-1.2%	-3.8%	-18.3%
South West	£3,021	£2,232	£1,078	-3.6%	-7.9%	-18.5%
West Midlands (met)	£3,248	£2,398	£1,358	3.6%	-1.0%	2.6%
West Midlands (non-met)	£2,936	£2,169	£1,049	-6.3%	-10.5%	-20.8%
Yorkshire (met)	£3,081	£2,237	£1,202	-1.7%	-7.7%	-9.2%
Yorkshire (non-met)	£3,116	£2,281	£1,136	-0.6%	-5.8%	-14.2%
<b>Authority type averages in England</b>						
London Boroughs	£3,692	£2,754	-/-	17.8%	13.7%	
Metropolitan Districts	£3,170	£2,317	-/-	1.1%	-4.4%	
Unitary Authorities	£3,132	£2,335	-/-	-0.1%	-3.6%	
Shire Authorities	£3,042	£2,256	-/-	-2.9%	-6.9%	
<b>England</b>	<b>£3,177</b>	<b>£2,352</b>	<b>£1,207</b>	<b>1.4%</b>	<b>-2.9%</b>	<b>-8.8%</b>
<b>England excluding London</b>	<b>£3,095</b>	<b>£2,288</b>	<b>£1,155</b>	<b>-1.2%</b>	<b>-5.6%</b>	<b>-12.7%</b>
<b>Wales and England</b>	<b>£3,172</b>	<b>£2,354</b>	<b>£1,214</b>	<b>1.2%</b>	<b>-2.8%</b>	<b>-8.3%</b>

(a) The figures for overall school expenditure in this table are on a "current" basis, that is they include expenditure financed by specific government grants. In Wales, for 2001-02, these include GEST funding, Special Grant Reports No. 4, No.8, and No.14. In England the grants include the standards fund, school standards grant, teachers pay reform, and class size reduction. The figures for delegated budgets do not include any expenditure financed by specific government grants, as in most cases whilst the funding is allocated to the schools, it does not form part of the delegated budget.

(b) Delegated budgets are recorded net of specific grants devolved to schools in Wales. Therefore any comparison with England for delegated budgets must be on a net basis. As England make more funds available through devolved grants and less through budget allocation, LEAs in Wales appear to delegate a higher proportion of their overall school budgets than their English counterparts.

(c) Figures for England exclude the Greater London Authority as it mainly covers police and fire expenditure in London. This does however, exclude some public transport expenditure from the England data, marginally affecting the England-Wales comparisons. Due to the differing structure of local authorities in Wales and England, it is not possible to show all authority expenditure per head by authority type on a basis consistent with that in Wales.

**ANALYSIS OF LOCAL AUTHORITY BUDGETS FOR SCHOOL SERVICES, 2001-02**

**Table 3 Background information for Welsh local education authorities, January 2001 (a)**

	FTE pupils ('000)	Average school size	Pupil teacher ratio	Share free meals	Difference on Wales average		
					School size	PTR	Share FSM
Isle of Anglesey	10.8	186	17.7	18.9%	-26.1%	-5.9%	-3.4%
Gwynedd	17.9	145	17.1	16.7%	-42.4%	-8.9%	-14.7%
Conwy	17.1	238	19.5	16.9%	-5.6%	4.0%	-13.2%
Denbighshire	16.1	251	19.6	15.6%	-0.2%	4.2%	-20.1%
Flintshire	25.0	275	19.3	12.2%	9.2%	2.7%	-37.4%
Wrexham	19.0	218	19.5	15.3%	-13.2%	3.7%	-21.7%
Powys	20.4	164	16.8	10.7%	-34.7%	-10.7%	-45.0%
Ceredigion	10.6	128	16.4	12.8%	-49.3%	-12.7%	-34.2%
Pembrokeshire	19.2	209	18.4	19.2%	-16.9%	-1.8%	-1.6%
Carmarthenshire	28.0	185	17.7	18.3%	-26.4%	-5.6%	-6.1%
Swansea	36.0	319	18.6	21.0%	26.6%	-0.8%	7.4%
Neath Port Talbot	22.1	259	18.0	23.4%	3.0%	-3.9%	19.8%
Bridgend	22.8	296	19.3	20.4%	17.4%	2.9%	4.3%
Vale of Glamorgan	21.2	336	19.1	14.5%	33.4%	1.5%	-26.0%
Cardiff	51.2	371	18.9	22.2%	47.4%	0.5%	13.8%
Rhondda Cynon Taff	43.8	262	19.5	25.5%	4.2%	4.0%	30.7%
Merthyr Tydfil	11.2	272	18.8	30.2%	8.0%	0.2%	54.6%
Caerphilly	30.7	296	19.7	21.7%	17.4%	5.0%	11.2%
Blaenau Gwent	12.1	274	19.0	26.9%	9.0%	1.3%	38.0%
Torfaen	17.2	325	19.6	20.2%	29.0%	4.2%	3.7%
Monmouthshire	13.2	274	19.7	10.8%	8.9%	5.1%	-44.7%
Newport	24.5	361	19.6	23.4%	43.4%	4.6%	19.9%
<b>Wales</b>	<b>490.0</b>	<b>252</b>	<b>18.8</b>	<b>19.5%</b>	<b>0.0%</b>	<b>0.0%</b>	<b>0.0%</b>
Maximum	51.2	371	19.7	30.2%	47.4%	5.1%	54.6%
Minimum	10.6	128	16.4	10.7%	-49.3%	-12.7%	-45.0%

(a) This table shows information based on pupil numbers, school numbers, teacher numbers and entitlement to free school meals for nursery, primary, secondary and special schools, but excludes information for pupil referral units.

Local Government Finance Statistics Unit  
National Assembly for Wales  
November 2001

**ANALYSIS OF LOCAL AUTHORITY BUDGETS FOR SCHOOL SERVICES, 2001-02**

**Table 4 Background information for Wales and the English regions, January 2001 (a)**

	Number of LEAs	FTE pupils ('000)	Average school size	Pupil teacher ratio	Share free meals	Difference on Wales average		
						School size	PTR	Share FSM
<b>Wales</b>	<b>22</b>	<b>490.0</b>	<b>252</b>	<b>18.8</b>	<b>19.5%</b>	<b>0.0%</b>	<b>0.0%</b>	<b>0.0%</b>
<b>Regional averages in England</b>								
East	10	828.5	307	19.6	11.7%	22.1%	4.3%	-40.1%
East Midlands	9	661.9	300	19.9	13.3%	19.2%	5.9%	-31.6%
Inner London	14	359.7	367	18.6	39.9%	45.6%	-0.7%	104.2%
Outer London	19	678.1	433	19.4	18.8%	71.9%	3.4%	-3.5%
North East (met)	5	172.6	350	18.6	27.2%	39.0%	-1.1%	39.3%
North East (non-met)	7	240.2	291	19.6	20.3%	15.6%	4.5%	4.1%
North West (met)	15	656.7	351	19.0	25.5%	39.3%	1.4%	30.8%
North West (non-met)	7	460.9	281	19.4	15.5%	11.4%	3.3%	-20.4%
South East	19	1,152.4	329	19.5	10.3%	30.5%	3.8%	-47.4%
South West	16	716.8	293	19.7	11.2%	16.4%	4.8%	-42.7%
West Midlands (met)	7	452.9	395	19.1	24.5%	56.7%	2.0%	25.7%
West Midlands (non-met)	7	416.3	294	19.8	12.3%	16.9%	5.6%	-37.0%
Yorkshire (met)	9	551.3	358	19.6	20.0%	42.2%	4.5%	2.6%
Yorkshire (non-met)	6	256.5	286	20.0	13.8%	13.7%	6.5%	-29.5%
<b>Authority type averages in England</b>								
London Boroughs	33	1,037.8	407	19.1	26.1%	61.8%	1.9%	33.8%
Metropolitan Districts	36	1,833.5	363	19.2	23.8%	44.1%	2.2%	21.8%
Unitary Authorities	46	1,279.2	346	19.6	17.5%	37.6%	4.4%	-10.5%
Shire Authorities	35	3,454.2	289	19.7	10.6%	14.9%	4.7%	-45.5%
<b>England</b>	<b>150</b>	<b>7,604.7</b>	<b>327</b>	<b>19.5</b>	<b>17.1%</b>	<b>30.0%</b>	<b>3.7%</b>	<b>-12.4%</b>
<b>England excluding London</b>	<b>117</b>	<b>6,567.0</b>	<b>317</b>	<b>19.5</b>	<b>15.7%</b>	<b>26.1%</b>	<b>3.9%</b>	<b>-19.8%</b>
<b>Wales and England</b>	<b>172</b>	<b>8,094.7</b>	<b>321</b>	<b>19.4</b>	<b>17.2%</b>	<b>27.7%</b>	<b>3.4%</b>	<b>-11.7%</b>

(a) This table shows information based on pupil numbers, school numbers, teacher numbers and entitlement to free school meals for nursery primary, secondary and special schools, but excludes information for pupil referral units.

Local Government Finance Statistics Unit  
National Assembly for Wales  
November 2001

**ANALYSIS OF LOCAL AUTHORITY BUDGETS FOR SCHOOL SERVICES, 2001-02**

**Table 5 School services in Wales and England from 1990-91 to 2001-02 (a)**

	1990-1	1991-2	1992-3	1993-4	1994-5	1995-6	1996-7	1997-8	1998-9	1999-0	2000-1	2001-2
<b>Amounts at outturn prices</b>												
Wales												
Total spend (£M)	849.6	943.8	1,039.6	1,062.6	1,095.4	1,129.0	1,151.1	1,173.6	1,235.6	1,320.1	1,409.2	1,529.6
FTE pupils ('000)	458.5	462.0	467.8	473.7	479.8	484.6	487.6	489.7	490.5	490.7	490.6	490.6
Spend per pupil (£)	1,853	2,043	2,222	2,243	2,283	2,330	2,361	2,397	2,519	2,690	2,873	3,118
England												
Total spend (£M)	13,152.5	14,569.3	15,934.0	16,120.3	16,711.4	17,090.0	17,656.2	18,200.8	19,258.5	20,643.2	22,139.3	24,661.9
FTE pupils ('000)	6,877.3	6,947.3	7,059.9	7,138.3	7,230.6	7,337.7	7,416.2	7,479.7	7,532.8	7,575.1	7,604.4	7,604.4
Spend per pupil (£)	1,912	2,097	2,257	2,258	2,311	2,329	2,381	2,433	2,557	2,725	2,911	3,243
<b>Amounts at constant 2001-02 prices</b>												
Wales												
Total spend (£M)	1,161.3	1,215.9	1,297.3	1,294.1	1,316.6	1,319.4	1,304.1	1,289.7	1,321.0	1,377.7	1,444.4	1,529.6
Spend per pupil (£)	2,533	2,632	2,773	2,732	2,744	2,722	2,675	2,634	2,693	2,808	2,944	3,118
England												
Total spend (£M)	17,978.5	18,770.1	19,885.3	19,632.2	20,085.9	19,971.8	20,002.2	20,002.5	20,589.5	21,543.4	22,692.8	24,661.9
Spend per pupil (£)	2,614	2,702	2,817	2,750	2,778	2,722	2,697	2,674	2,733	2,844	2,984	3,243
<b>Spend per pupil - difference of England average over Wales average</b>												
Amount (£)	81	70	44	18	34	-1	22	40	40	36	40	125
Relative	3.2%	2.6%	1.6%	0.7%	1.2%	0.0%	0.8%	1.5%	1.5%	1.3%	1.3%	4.0%
<b>Cumulative increase on 1990-91 base at constant 2001-02 prices</b>												
Wales												
Total spend (£M)		4.7%	11.7%	11.4%	13.4%	13.6%	12.3%	11.1%	13.8%	18.6%	24.4%	31.7%
Spend per pupil (£)		3.9%	9.5%	7.9%	8.3%	7.5%	5.6%	4.0%	6.3%	10.8%	16.2%	23.1%
England												
Total spend (£M)		4.4%	10.6%	9.2%	11.7%	11.1%	11.3%	11.3%	14.5%	19.8%	26.2%	37.2%
Spend per pupil (£)		3.4%	7.7%	5.2%	6.3%	4.1%	3.2%	2.3%	4.6%	8.8%	14.2%	24.1%
<b>Cumulative increase in pupil full time equivalents from 1990-91 base</b>												
Wales												
		0.8%	2.0%	3.3%	4.7%	5.7%	6.3%	6.8%	7.0%	7.0%	7.0%	7.0%
England												
		1.0%	2.7%	3.8%	5.1%	6.7%	7.8%	8.8%	9.5%	10.1%	10.6%	10.6%

(a) The expenditure figures in this table differ from those in tables 1 and 2 as they come from a different source, namely revenue outturn and revenue account budget returns, which are the only source providing a historical time-series. The main difference is the inclusion of services for the under 5s within schools' services in this table - these services are excluded from the figures behind tables 1 and 2. It is not possible to exclude services for under 5s for most of the years in this table. The figure for 2001-2 include grant income of £140m for provision for three year olds in England. Equivalent funding for Wales will be introduced in 2002-3.

**ANALYSIS OF LOCAL AUTHORITY BUDGETS FOR SCHOOL SERVICES, 2001-02**

**Table 6 Overview of budgets on the Wales England border for 2001-02**

	Overall current budget per pupil	Delegated net budget per pupil	Total revenue budget per person	FTE pupils	Average school size	Pupil teacher ratio	Free school meal entitlement
<b>North</b>							
Wirral MD	£3,224	£2,321	£1,376	54.2	390	18.3	28.9%
Conwy	£3,104	£2,374	£1,279	17.1	238	19.5	16.9%
Cheshire SC	£3,055	£2,250	£888	105.8	300	19.4	11.2%
Wrexham	£3,087	£2,273	£1,219	19.0	218	19.5	15.3%
Denbighshire	£2,937	£2,275	£1,399	16.1	251	19.6	15.6%
Flintshire	£2,850	£2,195	£1,178	25.0	275	19.3	12.2%
<b>Central</b>							
Powys	£3,515	£2,517	£1,378	20.4	164	16.8	10.7%
Telford & Wrekin UA	£3,004	£2,276	£1,273	25.8	307	20.1	20.5%
Herefordshire UA	£2,964	£2,107	£1,056	24.2	235	19.6	8.1%
Shropshire SC	£2,944	£2,196	£808	40.0	237	19.7	9.3%
Worcestershire SC	£2,936	£2,143	£793	80.6	296	19.7	10.0%
<b>South</b>							
Monmouthshire	£3,048	£2,371	£1,112	13.2	274	19.7	10.8%
Newport	£3,020	£2,361	£1,349	24.5	361	19.6	23.4%
Cardiff	£3,004	£2,395	£1,268	51.2	371	18.9	22.2%
South Glous UA	£2,964	£2,213	£962	40.0	345	19.8	8.1%
Gloucestershire SC	£2,943	£2,124	£822	85.6	275	19.2	8.7%
<b>Averages</b>							
Wales	£3,134	£2,423	£1,324	490.0	252	18.8	19.5%
<b>English averages</b>							
Metropolitan District	£3,170	£2,317	-/-	1,833.5	363	19.2	23.8%
Shire County	£3,042	£2,256	-/-	3,454.0	289	19.7	10.6%
Unitary Authority	£3,132	£2,335	-/-	1,279.2	346	19.6	17.5%
England	£3,177	£2,352	£1,207	7,604.7	327	19.5	17.1%

Local Government Finance Statistics Unit  
National Assembly for Wales  
November 2001

**ANALYSIS OF LOCAL AUTHORITY BUDGETS FOR SCHOOL SERVICES, 2001-02**

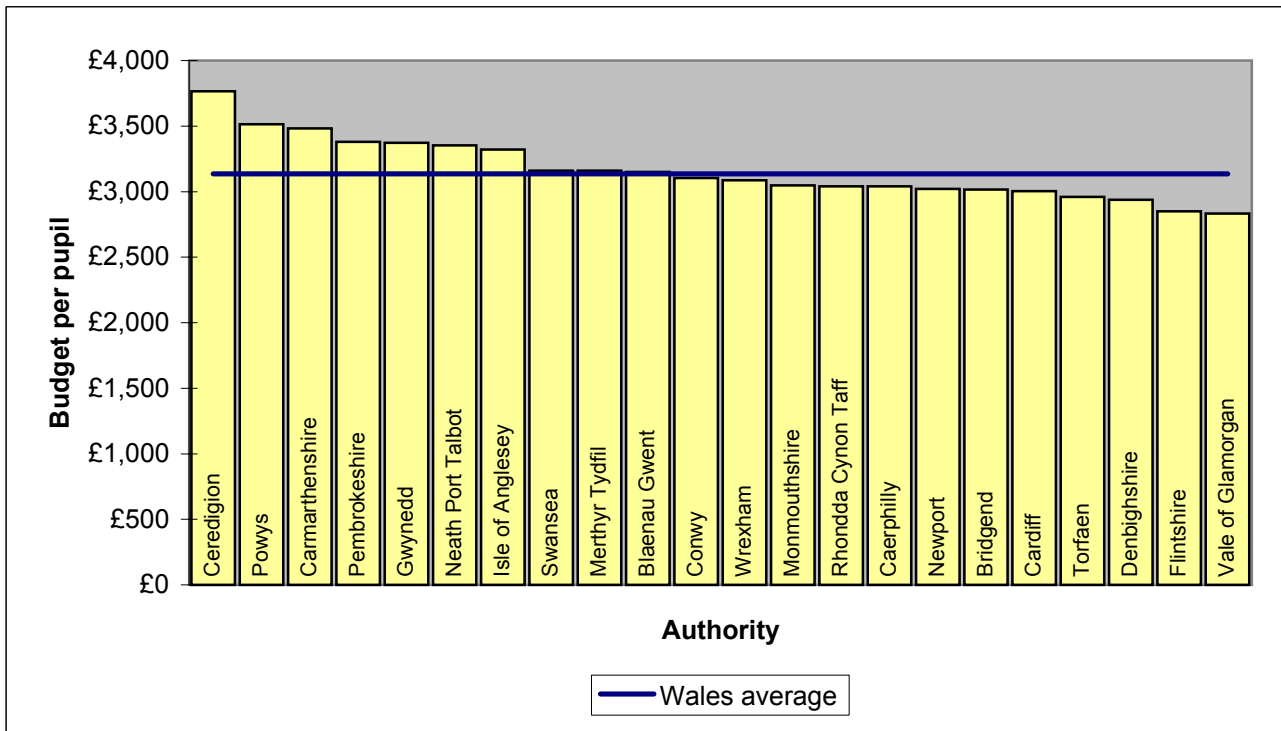
**Table 7**                      **Analysis of S52 part 1 for 2000-2001 outturn in Cheshire and NE Wales**

	Cheshire	Denbighshire	Flintshire	Wrexham	Total
<b>Total current LSB (£ million)</b>	<b>323.0</b>	<b>46.8</b>	<b>70.6</b>	<b>57.9</b>	<b>498.3</b>
<b>Share of current LSB (%)</b>					
Delegated	76.3%	77.0%	76.5%	73.1%	76.0%
Centrally held funds:					
Strategic management	3.3%	5.3%	4.1%	5.1%	3.8%
Provision of special educational needs (SEN)	4.6%	4.9%	4.7%	4.7%	4.7%
Access	5.8%	4.9%	6.9%	7.4%	6.0%
School improvement	0.5%	1.4%	1.6%	1.4%	0.9%
Specific grants	9.5%	6.4%	6.1%	8.3%	8.6%
Total centrally held funds	23.7%	23.0%	23.5%	26.9%	24.0%
<b>Amount per pupil (£)</b>					
Delegated	2,329	2,241	2,160	2,227	2,283
Centrally held funds					
Strategic management	102	154	117	156	115
Provision of special educational needs (SEN)	141	143	132	143	140
Access	176	144	196	225	181
School improvement	16	41	45	43	26
Specific grants	289	187	173	251	257
Total centrally held funds	723	668	664	818	720
<b>Total current LSB (£ million)</b>	<b>3,052</b>	<b>2,910</b>	<b>2,824</b>	<b>3,046</b>	<b>3,003</b>

Local Government Finance Statistics Unit  
National Assembly for Wales  
November 2001

**ANALYSIS OF LOCAL AUTHORITY BUDGETS FOR SCHOOL SERVICES, 2001-02**

**Chart 1 Local authority budget per pupil in Wales, 2001-02**

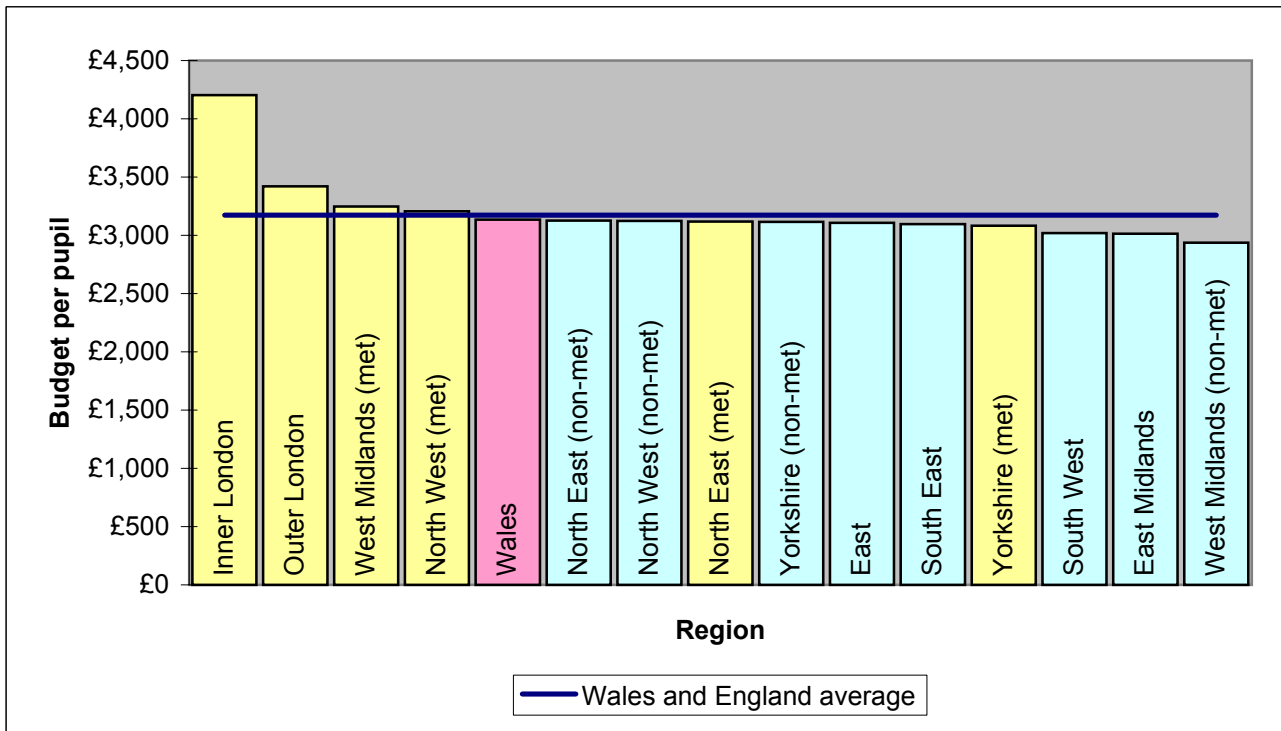


Local Government Finance Statistics Unit  
National Assembly for Wales  
November 2001



**ANALYSIS OF LOCAL AUTHORITY BUDGETS FOR SCHOOL SERVICES, 2001-02**

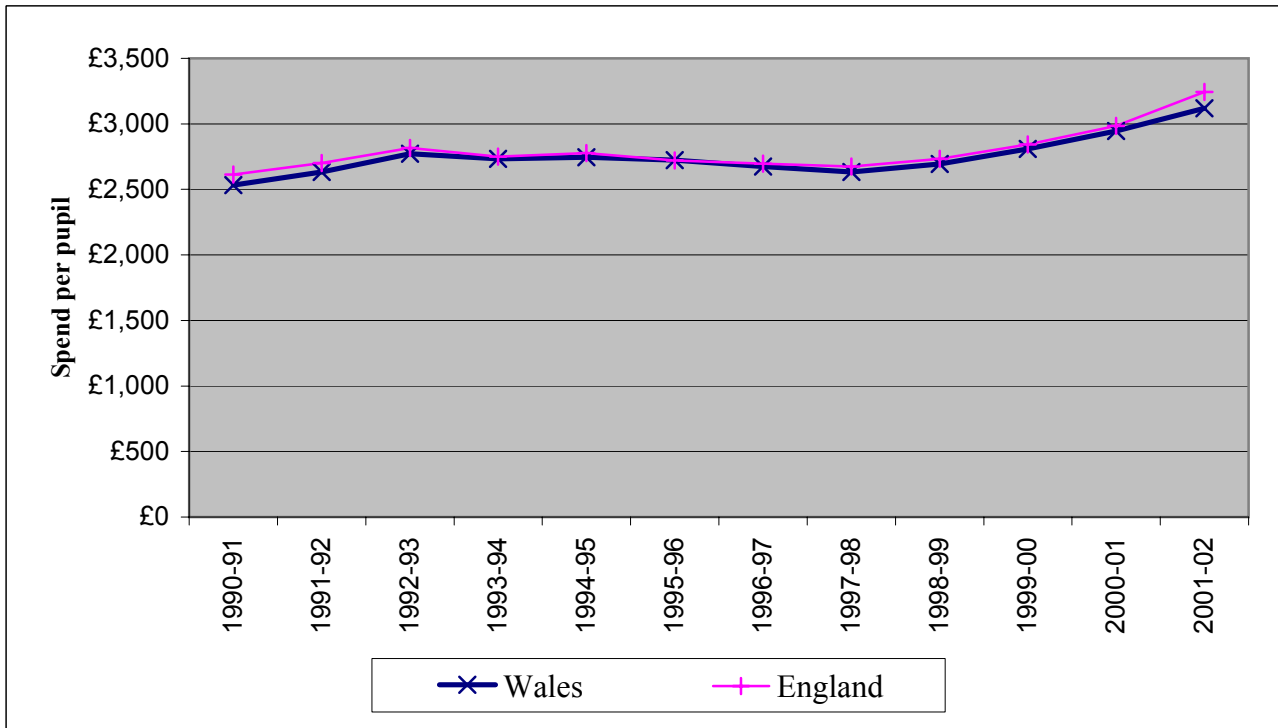
**Chart 2 Regional average budget per pupil in Wales and England, 2001-02**



Local Government Finance Statistics Unit  
National Assembly for Wales  
November 2001

**ANALYSIS OF LOCAL AUTHORITY BUDGETS FOR SCHOOL SERVICES, 2001-02**

**Chart 3** Historical trend in spend per pupil in Wales and England



Local Government Finance Statistics Unit  
National Assembly for Wales  
November 2001