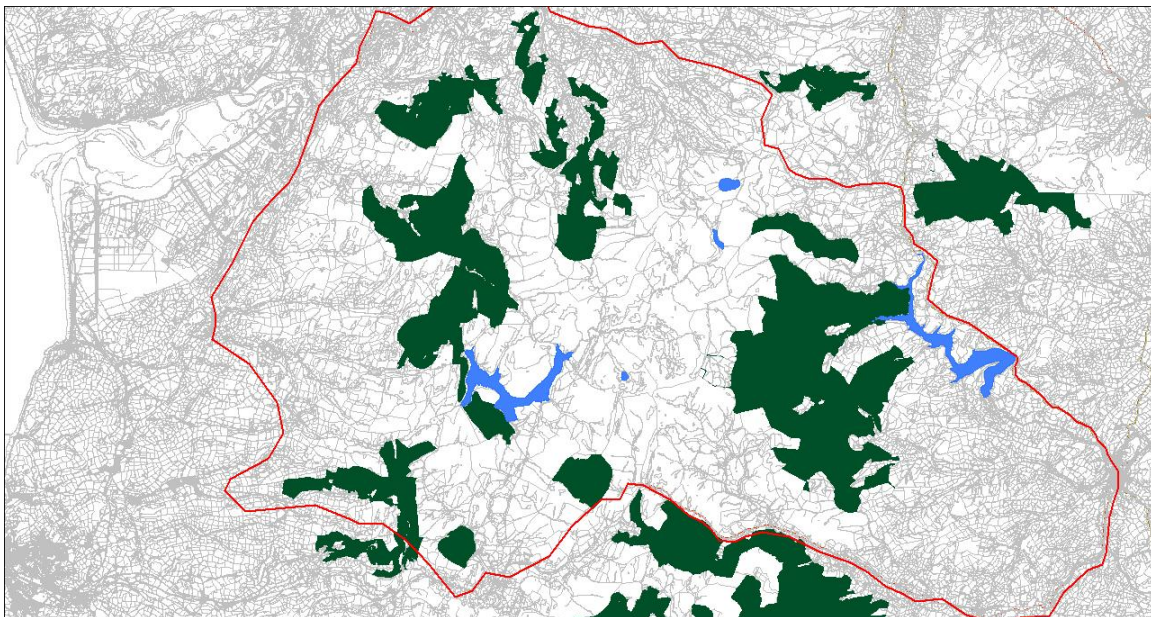




**Sustainability Committee
Inquiry into Biodiversity – Evidence from Wildlife Trust Wales
4 November 2010**

Case Study – Pumlumon Living Landscape Project

The Pumlumon Project is a Wildlife Trusts Wales (WTW) partnership project covering 40,000ha of farmland and upland habitat. It is located to the east of the Dyfi Estuary in the counties of Montgomeryshire and Ceredigion.



Project Aims

There is a growing recognition of the value in managing ecosystems and ecosystem processes at a landscape-scale. This approach can deliver a range of sustainable environmental services including biodiversity gain, flood water management, soil carbon management and climate change adaption. These ecosystem services can be used to provide a sustainable basis for economic activity thereby supporting rural communities.

In 2008 the Pumlumon project was developed as a means of delivering this approach. The aim of the project can be simply stated as thus:

To work with farmers to generate ecosystem services through sustainable land management at a landscape scale.

Project achievement to date:

Although the project is in its infancy, it has already begun to deliver on this aim:

- The project is currently working with 11 farmers and land managers to deliver ecosystem services including flood water management, access, and soil carbon management.
- Over 163ha of habitat (predominantly blanket bog and heathland) has been restored through sustainable grazing management and rewetting.
- The project is now working on a catchment of 345ha, blocking over 10km of drainage ditches to restore habitat and assist with flood water management.
- Habitat has been restored, linking and buffering the existing areas of habitat in protected areas (SSSIs).
- The project is creating and promoting environmentally and economically sustainable agricultural products including value-added beef.

Concluding remarks

In delivering this project the Wildlife Trust found the financial cost of facilitating the necessary land management change to be relatively low. However project delivery is staff time intensive and requires input from a range of specialist staff from across the organisation.

The Wildlife Trust also found the farming community within the project area widely receptive and ready to engage with the project.

Ends